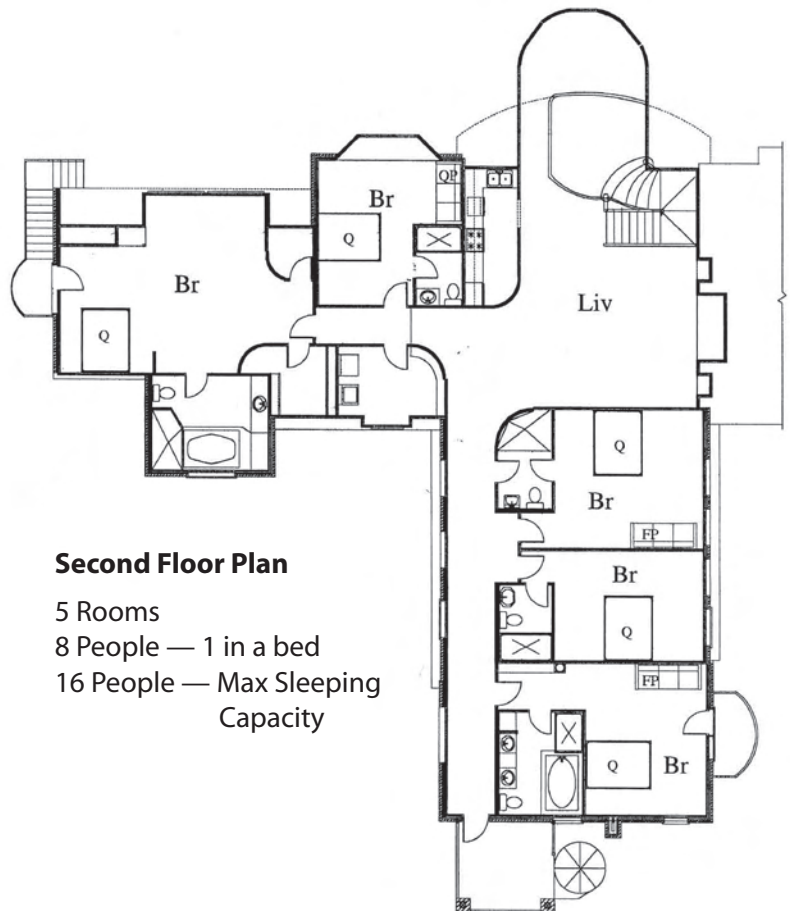


First Floor Plan

6 Rooms
 8 People — 1 in a bed
 12 People — Max Sleeping Capacity

- Q** = Queen
- QP** = Queen Pullout
- FP** = Full Pullout
- SP** = Single Pullout
- S** = Single
- F** = Full



Second Floor Plan

5 Rooms
 8 People — 1 in a bed
 16 People — Max Sleeping Capacity